

Parts and Services, LLC

P.O. Box 696 • Woodbury, CT 06798

Tel: (203) 263-5619 • FAX: (203) 263-0601

www.partsandservicesllc.com

PARTS PRICE LIST

FOR

POSITION SENSOR

EFFECTIVE FEBRUARY 1, 2016

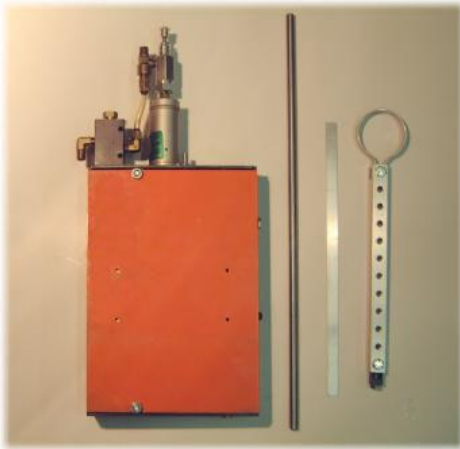
**The Customer is solely responsible to determine the suitability
of our products for their application.**

NOT RESPONSIBLE FOR TYPOGRAPHICAL ERRORS
PRICES SUBJECT TO CHANGE

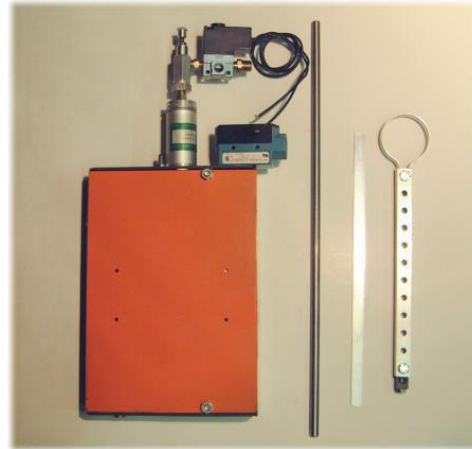
Parts and Services, LLC

P. O. Box 696 – 97 South Pomperaug Avenue
Woodbury, CT 06798-0696
Phone: 203-263-5619
Fax: 203-263-0601
www.partsandservicesllc.com

POSITION SENSOR



Model MPS-L-A-A
Left Hand Mount w/Air In and Air Out



Model MPS-R-E-E
Right Hand Mount w/Electric In and
Electric Out

Available in (3) Basic Models

Model SPS Small Position Sensor (6" high x 5" wide x 1 $\frac{3}{4}$ " deep with 2 $\frac{1}{4}$ " Travel)	\$1,700.00
Model MPS Medium Position Sensor (10 $\frac{1}{4}$ " high x 7" wide x 2 $\frac{1}{8}$ " deep with 2 $\frac{1}{4}$ " Travel)	\$1,450.00
Model LPS Large Position Sensor (10 $\frac{1}{4}$ " high x 9 $\frac{3}{4}$ " wide x 2 $\frac{1}{8}$ " deep with 4 $\frac{1}{2}$ " Travel)	\$1,570.00

**Can operate on Air or Electric input and output.
Hardware for right hand or left hand mounting included.**

Parts and Services, LLC

P. O. Box 696 – 97 South Pomperaug Avenue

Woodbury, CT 06798-0696

Phone: 203-263-5619

Fax: 203-263-0601

www.partsandservicesllc.com

Account of:

Ship to:

Order No: _____

Order No: _____

To order a Position Sensor, enter the appropriate product letter codes in the boxes below

MODEL – What size is needed Small, Medium or Large?

SPS – Small
MPS – Medium
LPS – Large

LOCATION CODES – Where will the unit be mounted?

L- Left
R - Right

INPUT CODES – What will be used to operate the unit?

A – Air
E - Electric

OUTPUT CODES – What output module is required?

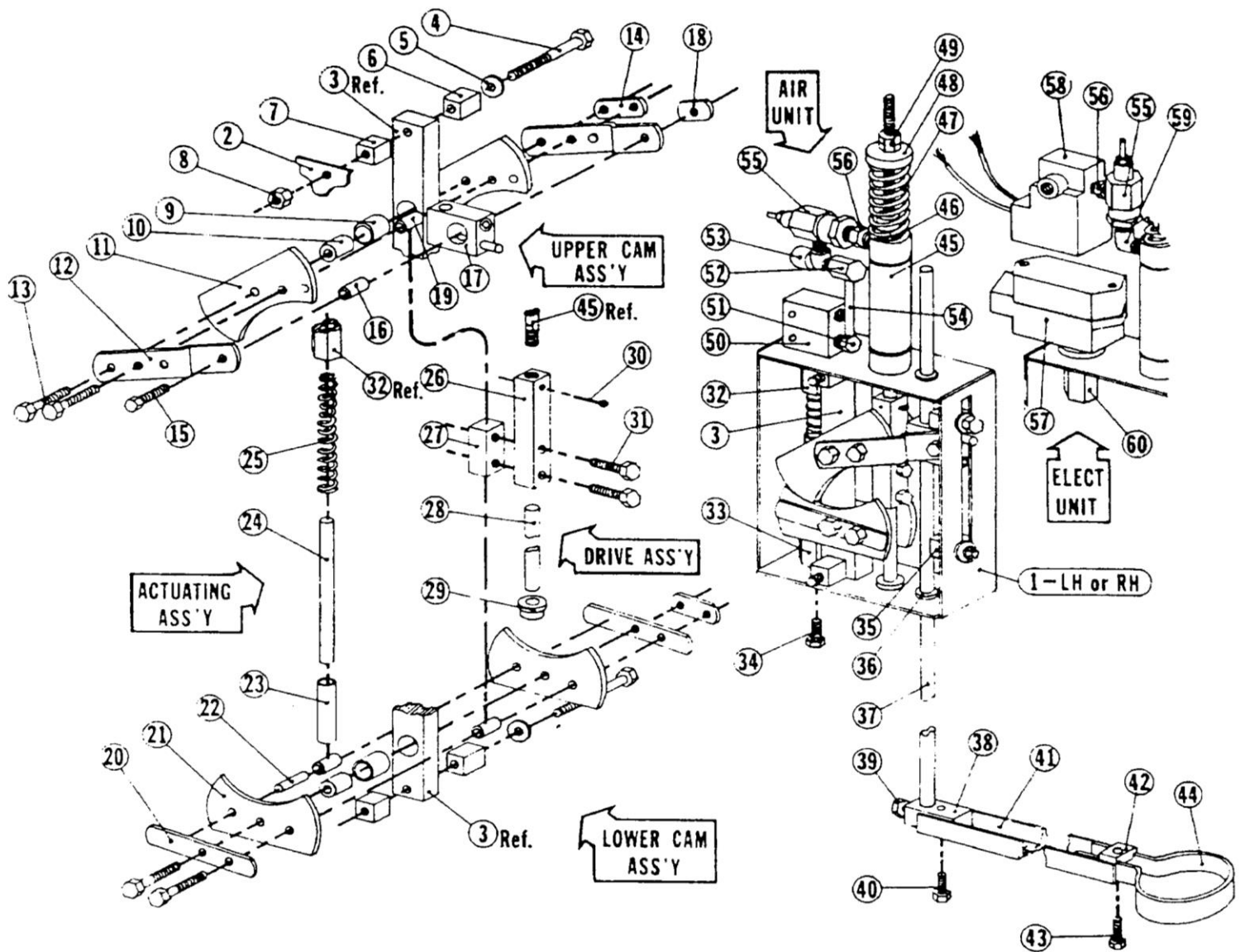
A – Air
E - Electric

	—		—		—	
--	---	--	---	--	---	--

Upon request, a foot pedal may also be purchased from Parts and Services, LLC

MODEL SPS - SMALL POSITION SENSOR PARTS LIST

PART #	PART NAME	PRICE	PART #	PART NAME	PRICE
SPS-1	Frame (Specify Left or Right Hand)	147.00	SPS-33	Cam Stop Block	11.75
SPS-2	Cover (Specify Left or Right Hand)	30.50	SPS-34	Cam Stop Bolt	1.00
SPS-3	Frame Boss	103.00	SPS-35	Stop Assembly	31.50
SPS-4	Frame Bolt	2.00	SPS-36	Drive Bushing	10.00
SPS-5	Flat Washer	0.75	SPS-37	Test Rod	26.25
SPS-6	Frame Spacer	6.25	SPS-38	Test Rod Clamp	27.75
SPS-7	Cover Block	6.25	SPS-39	Test Rod Bolt	1.00
SPS-8	Hex Nut (1/4-28)	0.75	SPS-40	Test Arm Bolt	1.00
SPS-9	Cam Bushing	9.50	SPS-41	Test Arm	17.00
SPS-10	Cam Shaft	5.25	SPS-42	Test Nut	2.75
SPS-11	Upper Cam	63.00	SPS-43	Test Bolt	1.00
SPS-12	Lever	19.00	SPS-44	Test Ring - Std.	17.00
SPS-13	Cam Bolt	1.00	SPS-45	Air Cylinder	172.00
SPS-14	Cam Nut	3.00	SPS-46	Spring Guide	2.75
SPS-15	Test Block Bolt	1.00	SPS-47	Drive Spring	9.50
SPS-16	Test Shaft	7.50	SPS-48	Spring Sleeve	4.25
SPS-17	Test Block Assembly	101.00	SPS-49	Spring Nut	1.00
SPS-18	Test Block Nut	2.75	USED ON AIR UNIT ONLY		
SPS-19	Test Ring - Round	5.25	SPS-50	Air Valve	68.50
SPS-20	Cam Plate	10.50	SPS-51	Barb Fitting LB	5.50
SPS-21	Lower Cam	63.00	SPS-52	Barb Fitting FLB	8.50
SPS-22	Cam Pin	3.25	SPS-53	Tee Fitting	10.50
SPS-23	Actuator Sleeve	9.50	SPS-54	Nylon Tube	4.00
SPS-24	Actuator Rod	10.00	USED ON AIR & ELECTRICAL UNITS		
SPS-25	Actuator Spring	9.50	SPS-55	Flow Control Valve	95.50
SPS-26	Drive Bar	26.25	SPS-56	Nipple	6.00
SPS-27	Drive Block	31.50	USED ON ELECTRICAL UNIT ONLY		
SPS-28	Drive Pin	3.25	SPS-57	Limit Switch	168.00
SPS-29	Actuator Guide Bushing	7.00	SPS-58	Solenoid Valve	112.50
SPS-30	Cotter Pin	2.50	SPS-59	Elbow	12.75
SPS-31	Drive Bolt	1.00	SPS-60	Electrical Nut	9.50
SPS-32	Air Nut	12.75			

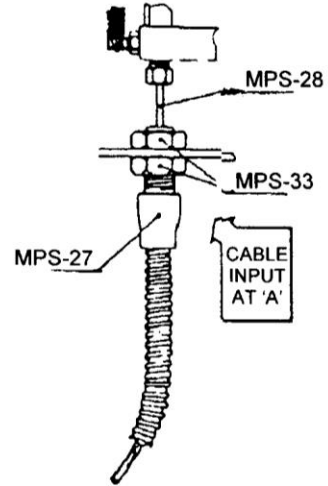
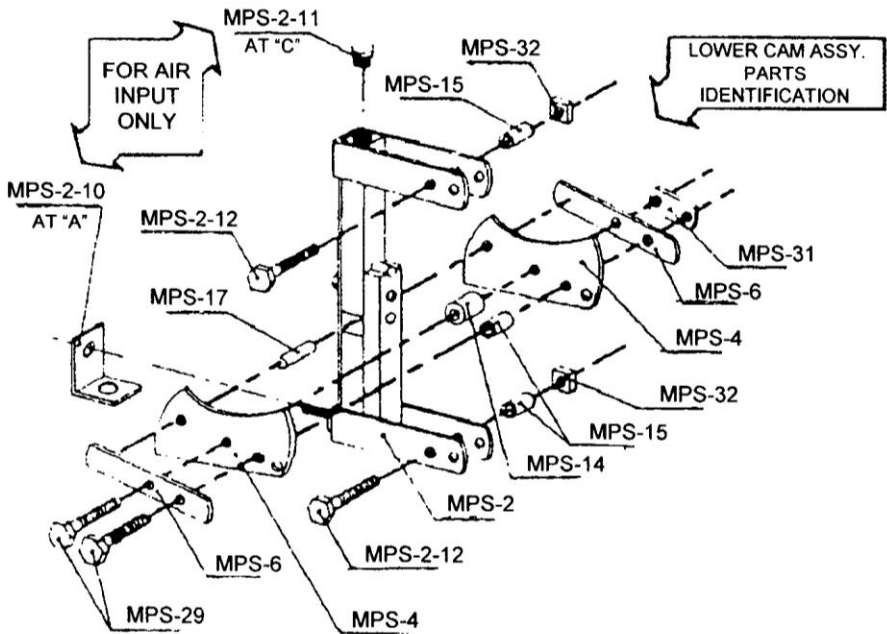
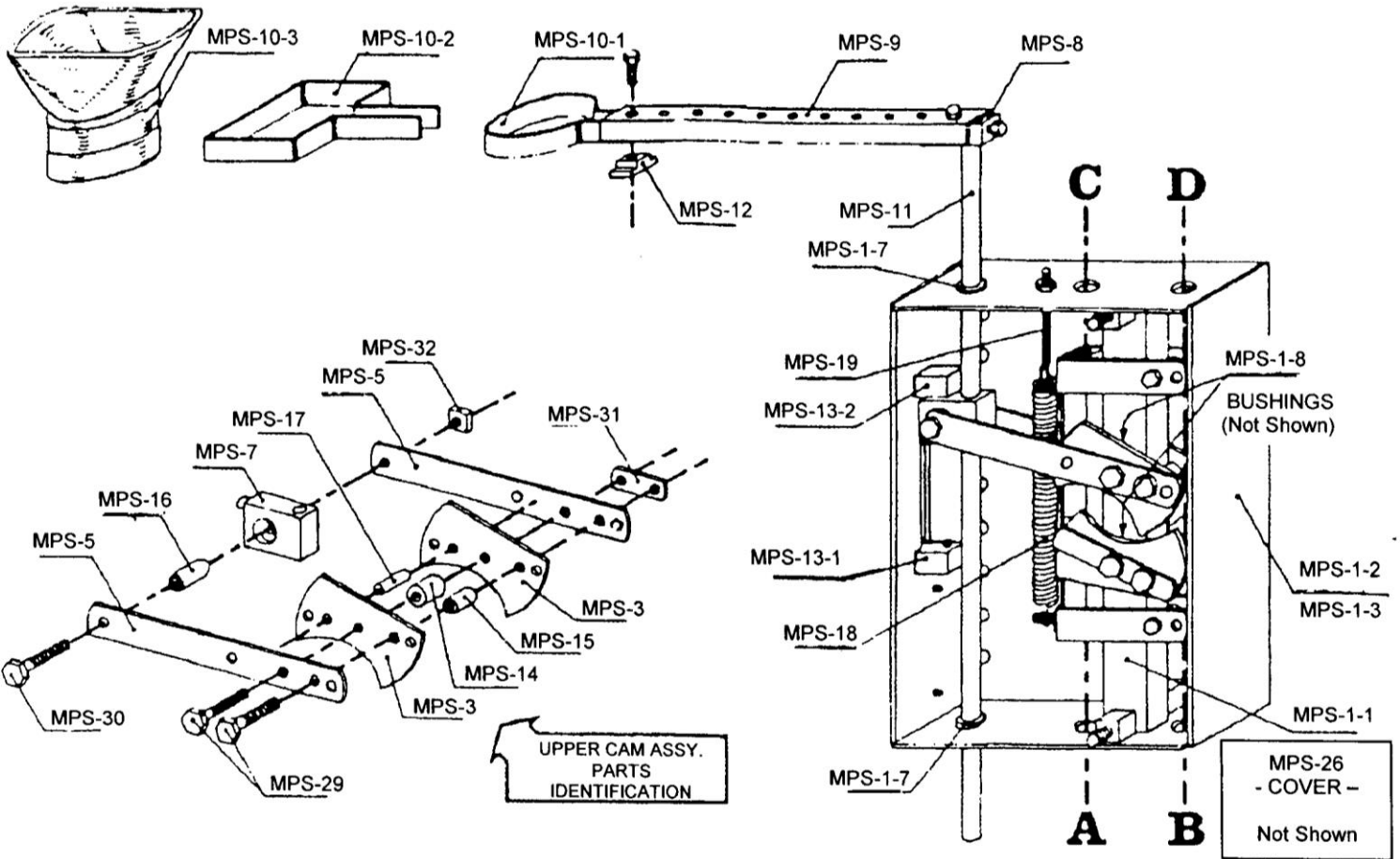


Model SPS Small Position Sensor

Parts Layout

MODEL MPS - MEDIUM POSITION SENSOR PARTS LIST

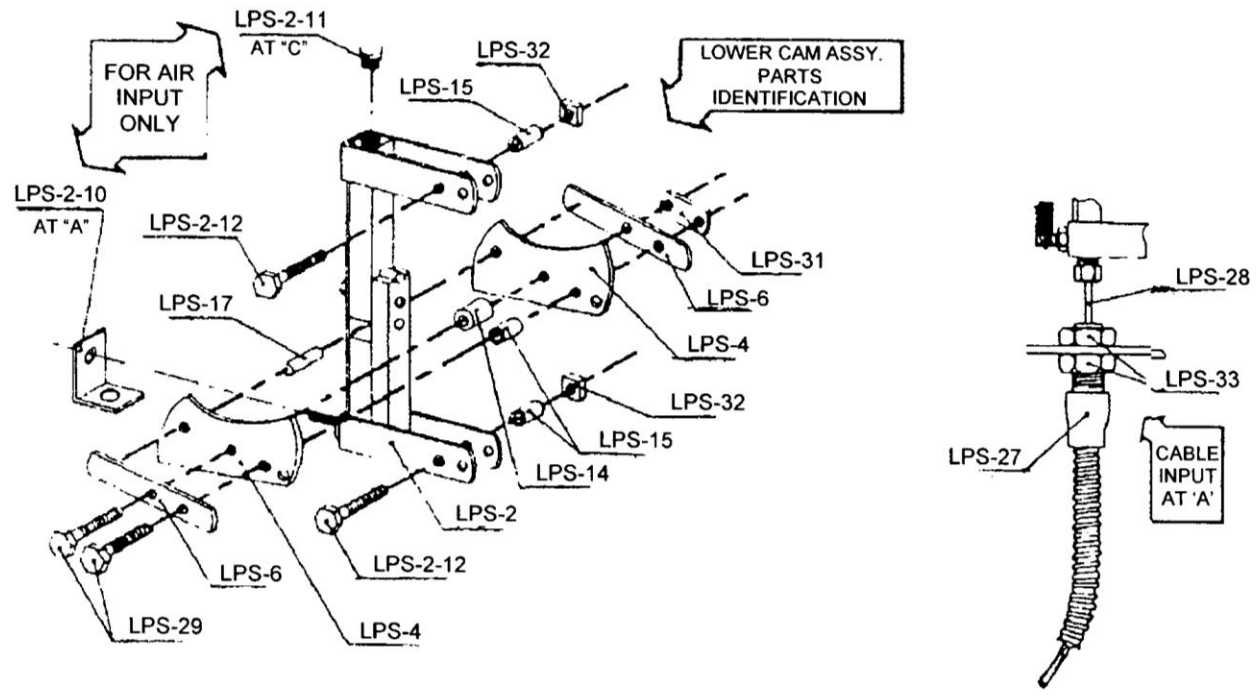
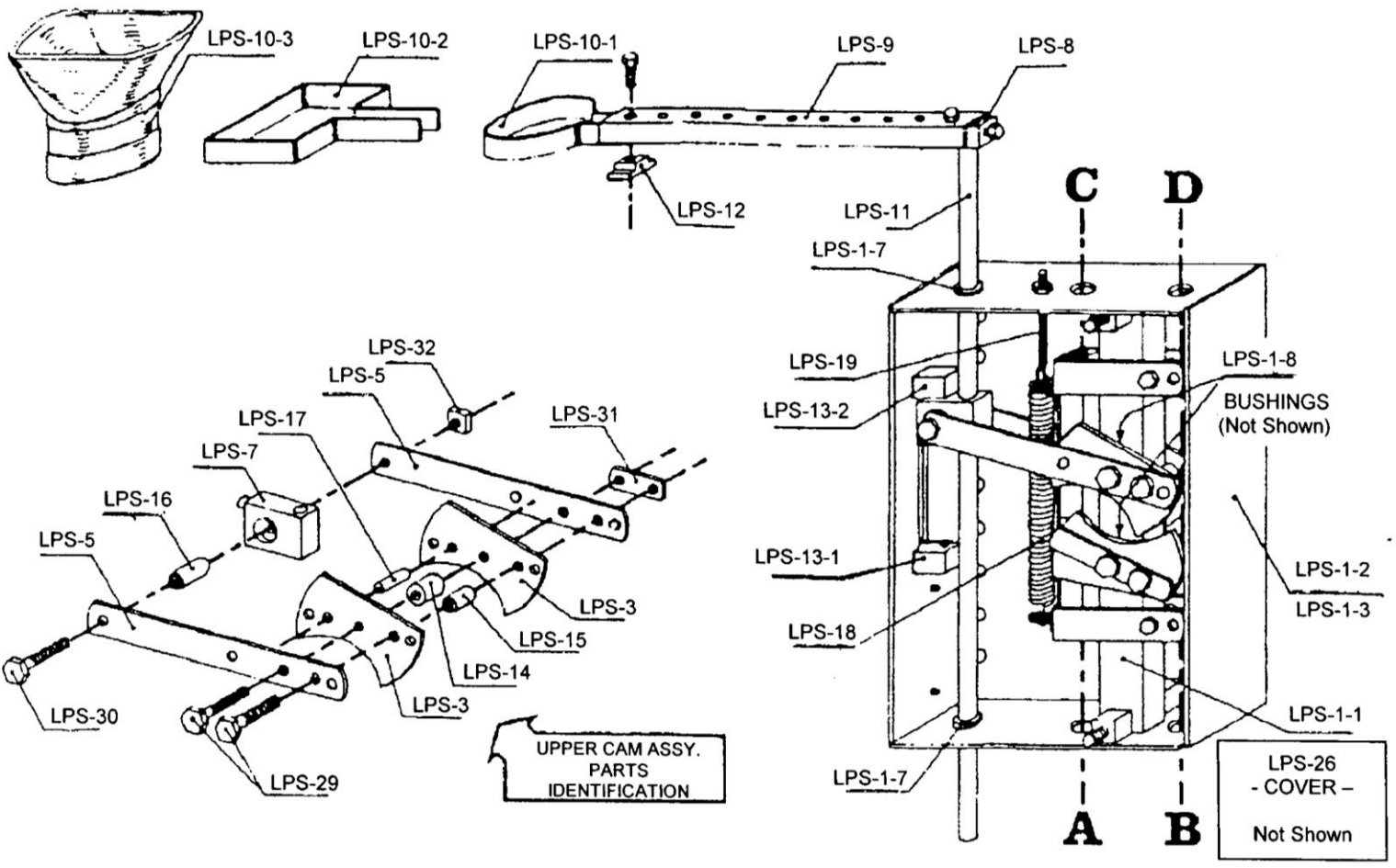
PART #	PART NAME	PRICE	PART #	PART NAME	PRICE
MPS-1-1	Frame Boss	103.00	MPS-15	Stop Shaft	5.25
MPS-1-2	Frame - R.H.	152.25	MPS-16	Test Bushing	7.50
MPS-1-3	Frame - L.H.	152.25	MPS-17	Cam Pin	3.25
MPS-1-7	Drive Bushing w/Retaining Ring	12.00	MPS-18	Drive Spring	9.50
MPS-1-8	Cam Bushing (not shown)	9.50	MPS-19	Spring Rod	5.25
MPS-2	Drive Assembly	246.75	MPS-20	Air Nut	12.75
MPS-2-4	Lower Drive Clip	25.75	MPS-21	Micro Switch Nut	15.75
MPS-2-4A	Upper Drive Clip	25.75	MPS-22	Clutch Cable Block	35.00
MPS-2-11	Drive Plug	9.50	MPS-25	Actuator - Upper	25.25
MPS-2-12	Drive Screw	1.00	MPS-26	Cover	30.50
MPS-3	Upper Cam	63.00	MPS-27	Tube Assembly	135.00
MPS-4	Lower Cam	63.00	MPS-28	Cable Assembly	73.50
MPS-5	Lever	19.00	MPS-29	Cam Bolt	1.00
MPS-6	Cam Plate	10.50	MPS-30	Test Bolt	1.00
MPS-7	Test Block Assembly	101.00	MPS-31	Cam Nut	3.00
MPS-8	Test Rod Clamp	27.75	MPS-32A	Stop Nut for Test Block Assembly	3.50
MPS-9	Test Arm	17.00	MPS-32B	Stop Nut for Drive Assembly	3.50
MPS-9-1	Test Arm Material x 6' long	61.00	MPS-33	Tube Nut	2.75
MPS-10-1	Test Ring - Round	17.00	MPS-46	Electric Limit Switch	168.00
MPS-10-2	Test Ring - Square	20.00	MPS-47	Air Valve	175.50
MPS-10-2A	Test Ring Material x 6' long	26.25	<i>Following parts not illustrated</i>		
MPS-10-3	Flanged Sensing Shield	52.50	MPS-50	Air Cylinder - Push	84.00
MPS-10-4	Round - 1" ID (\$7.50 + \$2.00/in. - state length) Lexan Tube		MPS-51	Air Cylinder - Pull	84.00
MPS-10-7	Round - 1¼" ID (\$7.50 + \$2.75/in.-state length) Lexan Tube		MPS-52	Air Footswitch	210.00
MPS-10-8	Round - 2" ID (\$7.50 + \$3.00/in. - state length) Lexan Tube		MPS-53	Flow Control Valve	95.50
MPS-11	Test Rod	26.25	MPS-54	Electric Solenoid	112.50
MPS-12	Test Nut	2.75	MPS-55	Electric Footswitch	393.75
MPS-13-1	Stop Assembly - Lower	31.50	MPS-61	Air Hose Assembly ¼" ID x 5/8" OD w/Male and Swivel Female Ends. Specify fitting size and overall length.	25.00 + 6.00/ft.
MPS-13-2	Stop Assembly - Upper	31.50	MPS-76	Air Cylinder Clutch Actuator w/Mtg. Brkt. and Clutch Connector	288.75
MPS-14	Cam Shaft	5.25			



**PARTS LAYOUT FOR
MODEL MPS MEDIUM POSITION SENSOR**

MODEL LPS - LARGE POSITION SENSOR PARTS LIST

PART #	PART NAME	PRICE	PART #	PART NAME	PRICE
LPS-1-1	Frame Boss	103.00	LPS-15	Stop Shaft	5.25
LPS-1-2	Frame - R.H.	152.25	LPS-16	Test Bushing	7.50
LPS-1-3	Frame - L.H.	152.25	LPS-17	Cam Pin	3.25
LPS-1-7	Drive Bushing w/Retaining Ring	10.00	LPS-18	Drive Spring	9.50
LPS-1-8	Cam Bushing (not shown)	9.50	LPS-19	Spring Rod	5.25
LPS-2	Drive Assembly	246.75	LPS-20	Air Nut	12.75
LPS-2-4	Lower Drive Clip	25.75	LPS-21	Micro Switch Nut	15.75
LPS-2-4A	Upper Drive Clip	25.75	LPS-22	Clutch Cable Block	35.00
LPS-2-11	Drive Plug	9.50	LPS-25	Actuator - Upper	25.25
LPS-2-12	Drive Screw	1.00	LPS-26	Cover	30.50
LPS-3	Upper Cam	63.00	LPS-27	Tube Assembly	135.00
LPS-4	Lower Cam	63.00	LPS-28	Cable Assembly	73.50
LPS-5	Lever	19.00	LPS-29	Cam Bolt	1.80
LPS-6	Cam Plate	10.50	LPS-30	Test Bolt	1.00
LPS-7	Test Block Assembly	101.00	LPS-31	Cam Nut	3.00
LPS-8	Test Rod Clamp	27.75	LPS-32A	Stop Nut for Test Block Assembly	3.50
LPS-9	Test Arm	17.00	LPS-32B	Stop Nut for Drive Assembly	3.50
LPS-9-1	Test Arm Material x 6' long	61.00	LPS-33	Tube Nut	2.75
LPS-10-1	Test Ring - Round	17.00	LPS-46	Electric Limit Switch	168.00
LPS-10-2	Test Ring - Square	20.00	LPS-47	Air Valve	175.50
LPS-10-2A	Test Ring Material x 6' long	26.25	<i>Following parts not illustrated</i>		
LPS-10-3	Flanged Sensing Shield	52.50	LPS-50	Air Cylinder - Push	84.00
LPS-10-4	Round - 1" ID (\$7.50 + \$2.00/in. - state length) Lexan Tube		LPS-51	Air Cylinder - Pull	84.00
LPS-10-7	Round - 1¾" ID (\$7.50 + \$2.75/in.-state length) Lexan Tube		LPS-52	Air Footswitch	210.00
LPS-10-8	Round - 2" ID (\$7.50 + \$3.00/in. - state length) Lexan Tube		LPS-53	Flow Control Valve	95.50
LPS-11	Test Rod	26.25	LPS-54	Electric Solenoid	112.50
LPS-12	Test Nut	2.75	LPS-55	Electric Footswitch	393.75
LPS-13-1	Stop Assembly - Lower	31.50	LPS-61	Air Hose Assembly ¼" ID x ⅝" OD w/Male and Swivel Female Ends. Specify fitting size and overall length.	25.00 + 6.00/ft.
LPS-13-2	Stop Assembly - Upper	31.50	LPS-76	Air Cylinder Clutch Actuator w/Mtg. Brkt. and Clutch Connector	288.75
LPS-14	Cam Shaft	5.25			



**PARTS LAYOUT FOR
MODEL LPS LARGE POSITION SENSOR**